

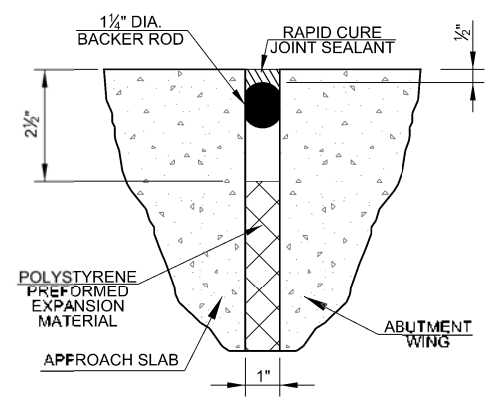
APPROACH SLAB NO. 1
TOP LAYER REINFORCING STEEL DETAIL SHOWN
(TYP. FOR EACH APPROACH SLAB)

APPROACH SLAB NO. 2
BOTTOM LAYER REINFORCING STEEL DETAIL SHOWN
(TYP. FOR EACH APPROACH SLAB)

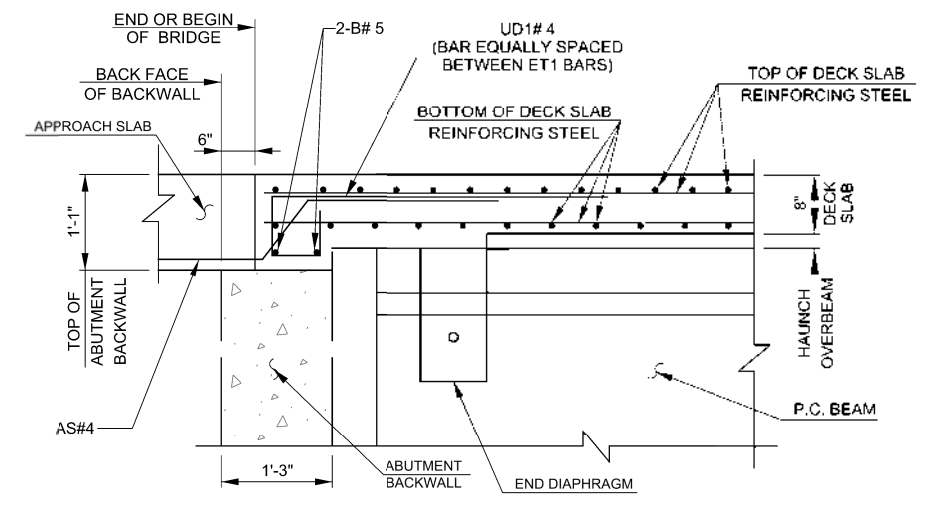
APPROACH SLAB QUANTITIES			
ITEM	UNIT	APPROACH SLAB NO. 1	APPROACH SLAB NO. 2
① APPROACH SLAB	S.Y.	70.80	70.80
SAW-CUT GROOVING	S.Y.	57.00	57.00

① THE CONTRACT UNIT PRICE FOR APPROACH SLAB SHALL BE FULL COMPENSATION FOR CONCRETE, REINFORCING STEEL, BACKER ROD, RAPID CURE JOINT SEALANT, POLYSTYRENE, LABOR, EQUIPMENT AND OTHER INCIDENTALS NECESSARY TO COMPLETE THE WORK AS SPECIFIED ON THE PLANS. THERE IS AN ESTIMATED 25.60 C.Y. OF CLASS AA CONCRETE AND AN ESTIMATED 5290.0 LB. OF REINFORCING STEEL IN EACH APPROACH SLAB.

APPROACH SLAB BAR LIST (ONE SHOWN, TWO REQUIRED)				
PLAIN REINFORCING STEEL				
MARK	SIZE	NO.	FORM	LENGTH
TT1	#4	42	STR.	15'-7"
BT1	#5	31	STR.	31'-6"
TL1	#4	34	STR.	19'-8"
BL1	#9	49	STR.	19'-8"
AS	#4	33	STR.	5'-0"

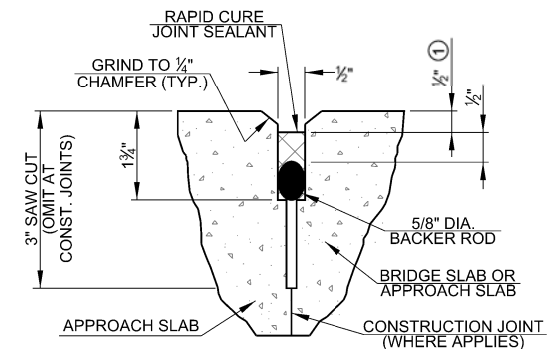


WING JOINT - DETAIL B



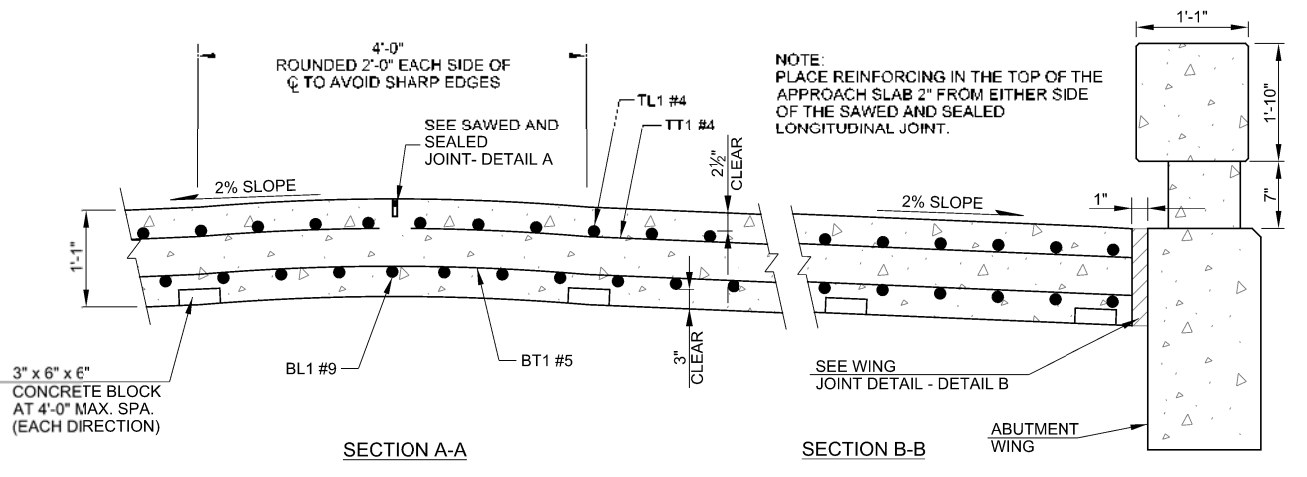
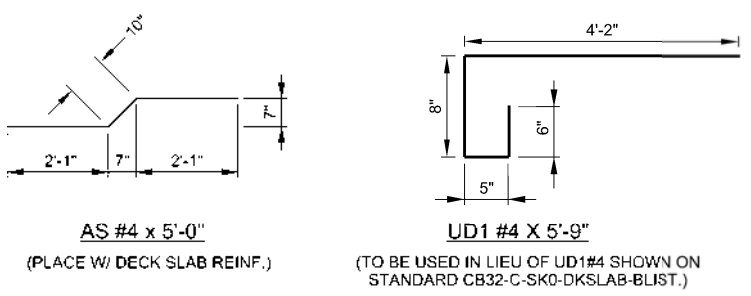
TYPICAL DECK SLAB REINFORCING AT ABUTMENT BACKWALL - SECTION C-C

- NOTES:
- USE THIS DETAIL IN LIEU OF "TYPICAL DECK SLAB REINFORCING AT ABUTMENT BACKWALL" SHOWN ON STANDARD CB32-C-SK0-LSECT-PCB.
 - REINFORCING STEEL EB#5, ET#4 IN DECK SLAB SHALL BE FIELD MODIFIED FROM STANDARD CB32-C-SK0-DKSLB-BLIST.
 - CONTRACTOR SHALL USE CLSM BACKFILL IN LIEU OF GRANULAR BACKFILL UNDER APPROACH SLAB. SEE SECTION E-E IN STD. CB26-32-C-SK0-ABUT-MISC FOR DETAIL.



① THIS DIMENSION SHALL TAPER FROM 1/2" AT EDGE OF DRIVING LANE/SHOULDER TO 1/8" AT FACE OF TRAFFIC RAILS FOR TRANSVERSE JOINTS ONLY.

SAWED AND SEALED JOINT - DETAIL A



NOTE:
FOR ADDITIONAL DETAIL
OF CONCRETE TRAFFIC
RAIL, SEE STD. TR3-2

12/16/2016 N:\AD06 YANNUBEE CREEK\Drawings\AD06-20-APPROACH SLAB.dgn

DESIGN	BP	06/16	MCCURTAIN COUNTY	BRIDGE OVER YANNUBEE CREEK
DRAWN	JH	06/16		
CHECKED	SK	06/16		
APPROVED				
SQUAD	KCS		STATE J/P NO. 25468(04)	SHEET NO. 19

APPROACH SLAB DETAILS